



ROB WASHAM HOMES
 "BUILDING NEIGHBORHOODS SINCE 1989"

ARCHER

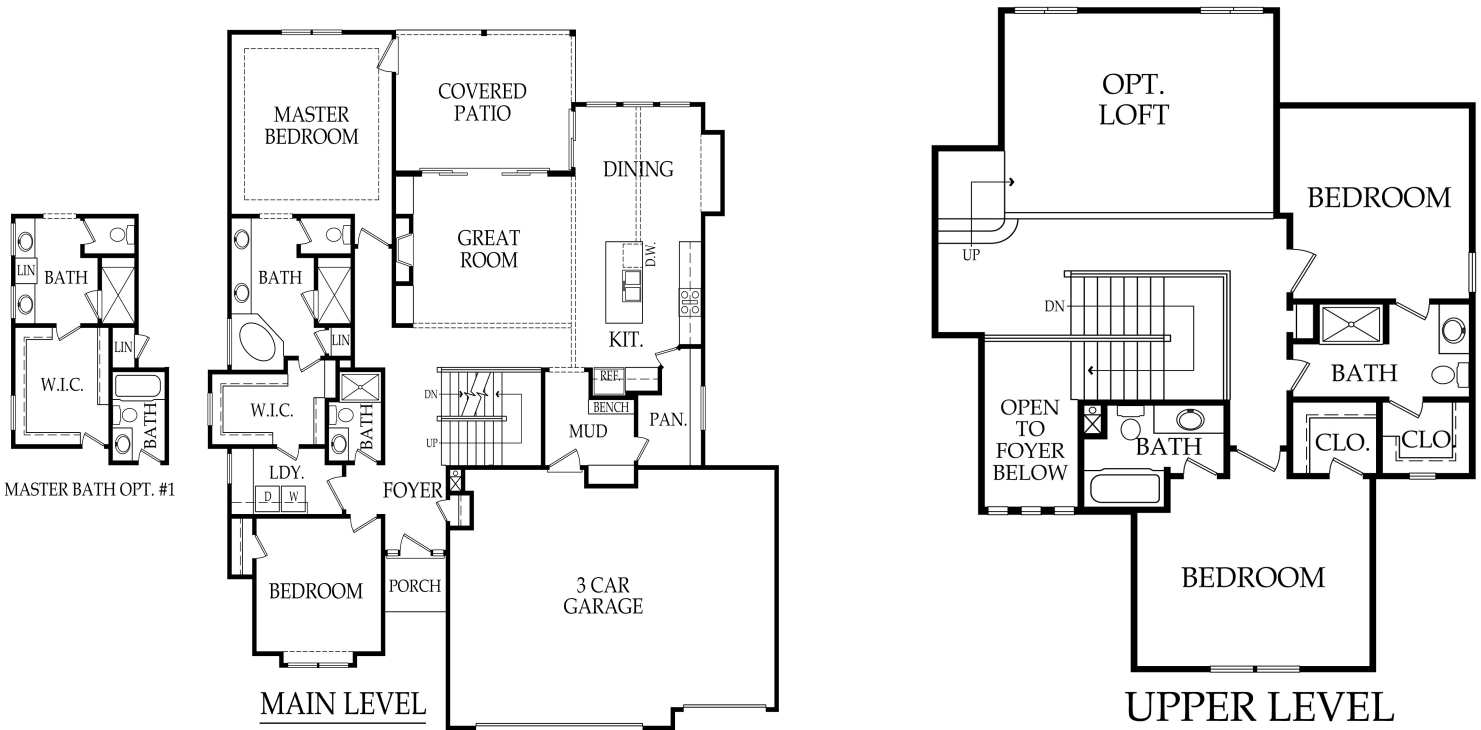


ELEVATION I



ELEVATION III

STORY & 1/2 PLAN • 4 BEDROOM • 3 BATH • 3 CAR GARAGE
 2,646 SQ. FT. + OPT. LOFT, TOTAL SQ. FT. 2,838



WWW.ROBWASHAMHOMES.COM

Note: Artist renderings may differ from actual plans. Elevations shown above may incorporate upgraded features. All sq. footage are approximate. Contact builder or realtor for most current information