



ROB WASHAM HOMES
 "BUILDING NEIGHBORHOODS SINCE 1989"

CAPRI



ELEVATION I



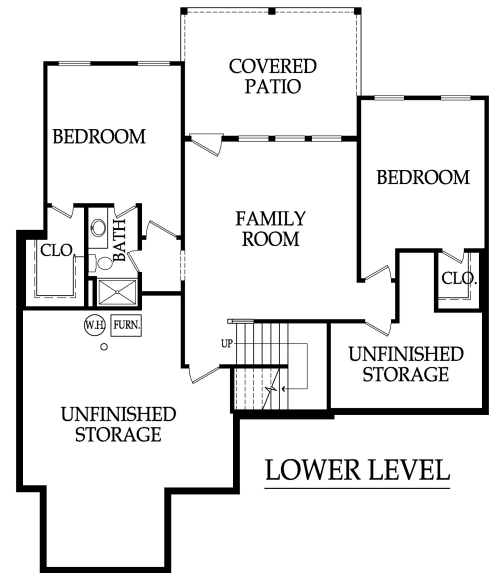
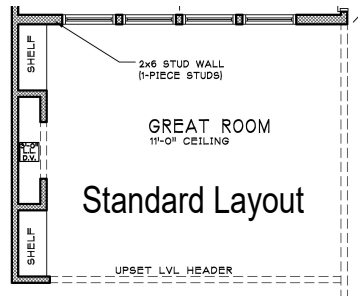
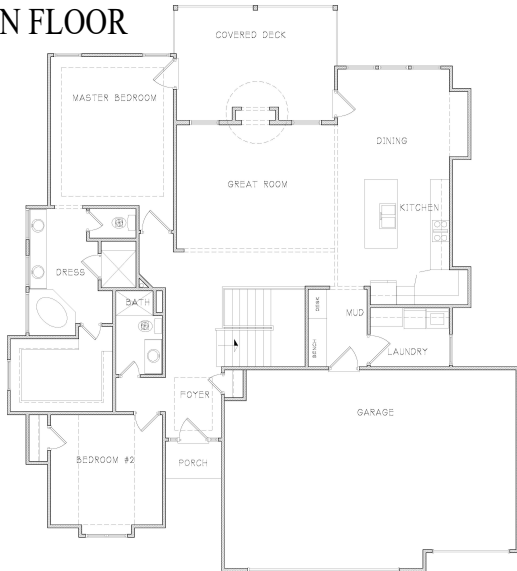
ELEVATION II



ELEVATION III

REVERSE PLAN • 4 BEDROOMS • 3 BATHS • 3 CAR GARAGE
 APPROX. 2,640 SQ. FT

MAIN FLOOR



WWW.ROBWASHAMHOMES.COM

Note: All artist renderings may differ from actual plans, elevation shown may incorporate upgraded features. All square footages are approximate, contact builder or realtor for most accurate information. Base price may vary on neighborhood and city requirements.